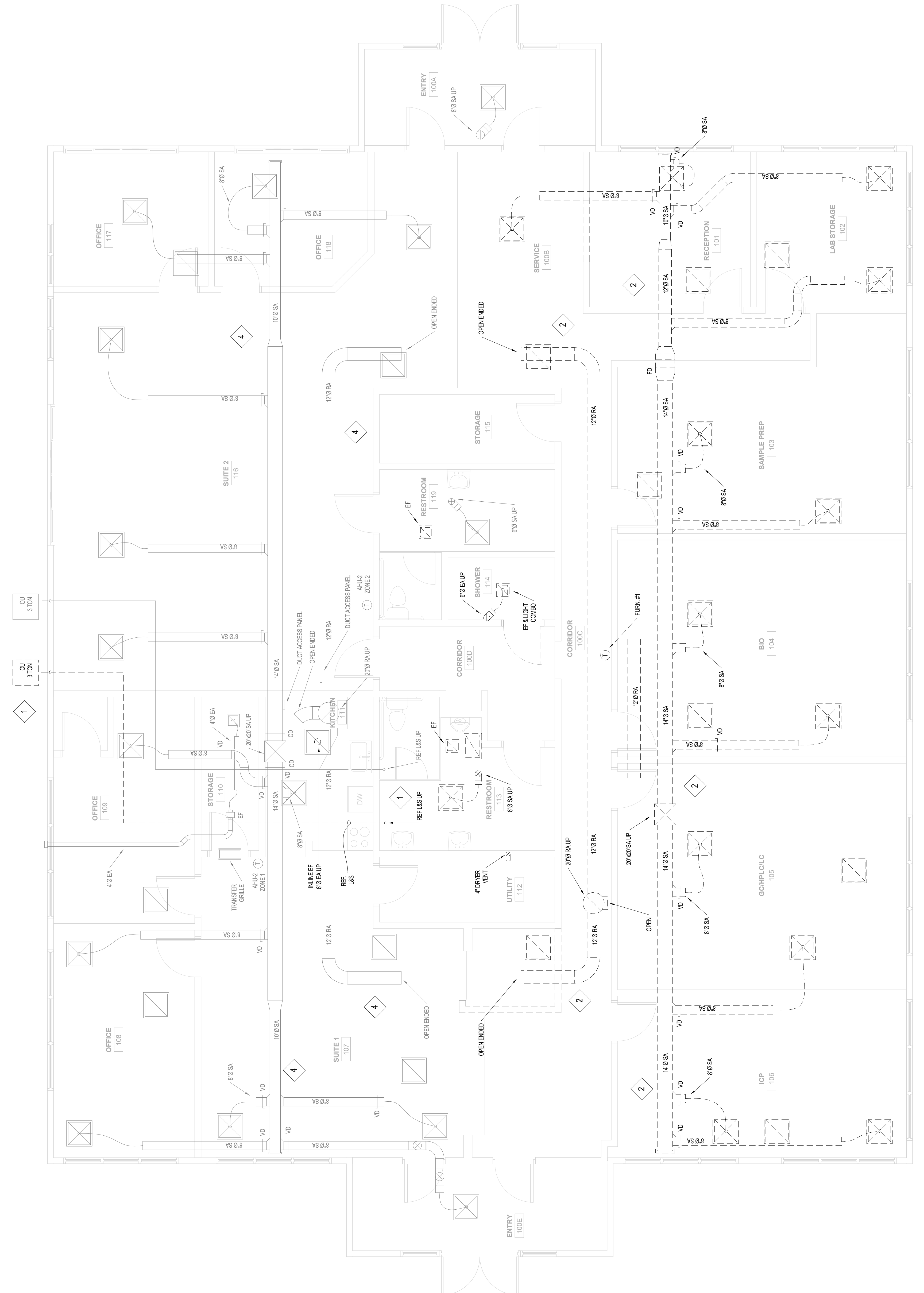


SPECIFIC MECHANICAL DEMOLITION NOTES:

1. DEMOLISH EXISTING OUTDOOR CONDENSING UNIT AND ASSOCIATED REFRIGERATION LIQUID & SUCTION PIPING.
2. DEMOLISH EXISTING FURNACE AND ASSOCIATED EXHAUST INTAKE AND EXHAUST FLUES ASSOCIATED WITH FURNACE TO BE REMOVED. NEW BOILER INTAKE AND EXHAUST FLUES. SEE NEW EXISTING DUCTWORK AND HVAC SYSTEM TO REMAIN.
3. DEMOLISH EXISTING INTAKE AND EXHAUST FLUES ASSOCIATED WITH FURNACE TO BE REMOVED. NEW BOILER INTAKE AND EXHAUST FLUES. SEE NEW EXISTING DUCTWORK AND HVAC SYSTEM TO REMAIN.
4. DEMOLISH EXISTING FURNACE AND ASSOCIATED EXHAUST INTAKE AND EXHAUST FLUES ASSOCIATED WITH FURNACE TO BE REMOVED. NEW BOILER INTAKE AND EXHAUST FLUES. SEE NEW EXISTING DUCTWORK AND HVAC SYSTEM TO REMAIN.



208 Pine Ave. #21 • Burlington, VT 05401
802-559-1753 • www.honoring.com
Mechanical | Electrical | Planning | Fire Protection

SCOTT + PARTNERS
ARCHITECTURE

7 CARMICHAEL ST. ESSEX JUNCTION, VT 05452
P 802.879.5153 F 802.872.2764 SCOTTPARTNERS.COM

project name:
RED CLOVER

project address:
90 Harvest Lane
Williston, VT 05495

scale:	1/4" = 1'-0"	
project no.	22194	
checked by:	LNC	
drawn by:	LNC	
proj. date:	08/15/22	
sheet date:	10/06/22	
No	Date	Revisions

sheet title:
**FIRST FLOOR -
MECHANICAL
DEMOLITION
PLAN**

sheet no.
M0.11

PERMIT SET - NOT FOR
CONSTRUCTION